

FAM5C Antibody (N-term)
Affinity Purified Rabbit Polyclonal Antibody (Pab)
Catalog # AP9487a**Specification**

FAM5C Antibody (N-term) - Product Information

Application	WB,E
Primary Accession	Q76B58
Other Accession	Q8K1M7 , Q499E0
Reactivity	Human
Predicted	Mouse, Rat
Host	Rabbit
Clonality	Polyclonal
Isotype	Rabbit IgG
Calculated MW	88445
Antigen Region	40-68

FAM5C Antibody (N-term) - Additional Information**Gene ID** 339479**Other Names**

BMP/retinoic acid-inducible neural-specific protein 3, DBCCR1-like protein 1, BRINP3, DBCCR1L, DBCCR1L1, FAM5C

Target/Specificity

This FAM5C antibody is generated from rabbits immunized with a KLH conjugated synthetic peptide between 40-68 amino acids from the N-terminal region of human FAM5C.

Dilution

WB~~1:1000

E~~Use at an assay dependent concentration.

Format

Purified polyclonal antibody supplied in PBS with 0.09% (W/V) sodium azide. This antibody is purified through a protein A column, followed by peptide affinity purification.

Storage

Maintain refrigerated at 2-8°C for up to 2 weeks. For long term storage store at -20°C in small aliquots to prevent freeze-thaw cycles.

Precautions

FAM5C Antibody (N-term) is for research use only and not for use in diagnostic or therapeutic procedures.

FAM5C Antibody (N-term) - Protein Information**Name** BRINP3

Synonyms DBCCR1L, DBCCR1L1, FAM5C

Function Inhibits neuronal cell proliferation by negative regulation of the cell cycle transition. Promotes pituitary gonadotrope cell proliferation, migration and invasion, when overexpressed. May play a role in cell pituitary tumor development.

Cellular Location

Secreted. Mitochondrion

Tissue Location

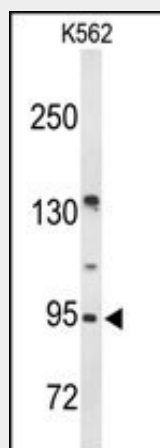
Strongly expressed in oral keratinocytes compared to the weak expression in tongue squamous cell carcinoma (SCC) Expressed in endothelial and aortic smooth muscle cells. Overexpressed in gonadotropinomas compared to normal pituitary tissues

FAM5C Antibody (N-term) - Protocols

Provided below are standard protocols that you may find useful for product applications.

- [Western Blot](#)
- [Blocking Peptides](#)
- [Dot Blot](#)
- [Immunohistochemistry](#)
- [Immunofluorescence](#)
- [Immunoprecipitation](#)
- [Flow Cytometry](#)
- [Cell Culture](#)

FAM5C Antibody (N-term) - Images



Western blot analysis of FAM5C Antibody (N-term) (Cat. #AP9487a) in K562 cell line lysates (35ug/lane). FAM5C (arrow) was detected using the purified Pab.

FAM5C Antibody (N-term) - References

Kuroiwa, T., et al. Oncol. Rep. 22(5):1005-1011(2009)
Connelly, J.J., et al. BMC Med. Genet. 9, 33 (2008)
Shorts-Cary, L., et al. Endocrinology 148(3):967-975(2007)